

**Polska**



Adresy

2015-06-17 10:16:50



Zagraniczne organizacje wspierające wymianę handlową w UE.



### **UK Trade & Investment**

Tay House

300 Bath

SCO-GLASGOW G2 4DX

Tel: (004420) 72158000

Fax: (004420) 7215282

Email: [julie.fenn@uktradeinvestment.gov.uk](mailto:julie.fenn@uktradeinvestment.gov.uk)

[www.uktradeinvest.gov.uk](http://www.uktradeinvest.gov.uk)

### **Instytut Bogactw Naturalnych**

(Natural Resources Institute (NRI))

University of Greenwich at Medway

Central Avenue

GB-CHATHAM MARITIME, KENT ME4 4TB

Tel: (00441634) 880088

Fax: (00441634) 880077

Email: [nri@greenwich.ac.uk](mailto:nri@greenwich.ac.uk)

[www.nri.org](http://www.nri.org)

### **Wales Trade International**

Welsh Assembly Government

Cathays Park

GB- CARDIFF CF10 3NQ

Tel: (00442920) 801046

Fax: (00442920) 823964

Email: [exports@wales.gsi.gov.uk](mailto:exports@wales.gsi.gov.uk)

Strona www: [www.walestrade.com](http://www.walestrade.com)

### **British Chambers of Commerce**

Manning House, 22 Carlisle Place, London SW1P 1JA

Tel.: (020) 7565 2000

Fax: (020) 75652049

e-mail: [info@britishchambers.org.uk](mailto:info@britishchambers.org.uk)

[www.britishchambers.org.uk](http://www.britishchambers.org.uk)

### **Thames Valley Group of Chambers of Commerce & Industry**

Commerce House, 2-6 Bath Road, Slough, Berks SL1 3SB

Tel: (01753) 577877

Fax: (01753) 524644

e-mail: [central@thamesvalleychamber.co.uk](mailto:central@thamesvalleychamber.co.uk)

[www.thamesvalleychamber.co.uk](http://www.thamesvalleychamber.co.uk)

### **Banbury & District Chamber of Commerce**

8 White Lion Walk, Banbury, Oxon OX16 8UD

Tel.: (01295) 255275

Fax: (01295) 273115

### **Birmingham Chamber of Commerce & Industry**

75 Harborne Rd, Birmingham B15 3D

Tel: (0121) 455 0268

Fax: (0121) 455 8670

e-mail: [info@birmingham-chamber.com](mailto:info@birmingham-chamber.com)

[www.birmingham-chamber.com](http://www.birmingham-chamber.com)

### **Bolton and Bury Chamber**

Commerce House, Bridgeman Place, BOLTON BL2 1DW

Fax: (01204) 363212

e-mail: [enquiries@chamberhelp.co.uk](mailto:enquiries@chamberhelp.co.uk)

[www.bolton-and-bury-chamber.co.uk](http://www.bolton-and-bury-chamber.co.uk)

### **Bristol Chamber of Commerce & Initiative**

16 Clifton Pk, Clifton, Bristol BS8 3BY

Tel.: (0117) 973 7373

Fax: (0117) 974 5365

e-mail: [enquires@bccci.westec.co.uk](mailto:enquires@bccci.westec.co.uk)

[www.business-in-the-west.org.uk](http://www.business-in-the-west.org.uk)

### **Cardiff Chamber of Commerce Trade & Industry**

1st Floor Corys Buildings, 57 Bute Street, Cardiff CF10 5ASJ

Tel.: (029) 2048 1648

Fax: (029) 2048 9785

e-mail: [enquiries@cardiffchamber.co.uk](mailto:enquiries@cardiffchamber.co.uk)

[www.cardiffchamber.co.uk](http://www.cardiffchamber.co.uk)

### **Central & West Lancashire Chamber of Commerce & Industry**

9-10 Eastway Business Village, Fulwood, Preston PR2 9WT

Tel.: (01772) 653000

Fax: (01772) 655544

e-mail: [info@lanschamber.co.uk](mailto:info@lanschamber.co.uk)

[www.lanschamber.co.uk](http://www.lanschamber.co.uk)

### **Chamber of Commerce & Industry for Medway**

Medway Business Point, Stirling Ho, Sunderland Quay

Medway City Estate, Rochester, Kent ME2 4HN

Tel.: (01634) 311411/2

Fax: (01634) 311440

### **Croydon & South London Chamber of Commerce & Industry (Inc)**

Commerce Ho, 1 Wandle Rd, Croydon CR9 1HY

Tel.: (020) 8680 2165

Fax: (020) 8688 4587

e-mail: [info@croydonchamber.org.uk](mailto:info@croydonchamber.org.uk)

[www.croydonchamber.org.uk](http://www.croydonchamber.org.uk)

### **Cumbria Chamber of Commerce & Industry**

Venture House, Guard Street, Workington, Cumbria CA14 4EW

Tel.: (01900) 700050

Fax: (01900) 604027

e-mail: [pmfearn@aol.com](mailto:pmfearn@aol.com)

### **Doncaster Chamber**

Enterprise House, White Rose Way, Hyde Park, Doncaster, S. Yorkshire DN4 5ND

Tel.: (01302) 341000

Fax: (01302) 328382

e-mail: [chamber@doncaster-chamber.co.uk](mailto:chamber@doncaster-chamber.co.uk)

[www.doncaster-chamber.co.uk](http://www.doncaster-chamber.co.uk)

**Dorset Chamber of Commerce & Industry**

3 New Fields Business Pk, Stinsford Rd, Nuffield, Poole, Dorset BH17 0DB

Tel.: (01202) 448800

Fax: (01202) 448838

e-mail: [contact@dcci.co.uk](mailto:contact@dcci.co.uk)

[www.dcci.co.uk](http://www.dcci.co.uk)

**Dudley Sandwell Chamber of Commerce**

Chamber House, Churchill centre, Dudley, W. Midlands DY2 7BL

Tel.: (01384) 343534

Fax: (01384) 821405

e-mail: [dudleychamber-guest@btinternet.com](mailto:dudleychamber-guest@btinternet.com)

Dundee & Tayside Chamber of Commerce & Industry

Chamber of Commerce Bldgs, Panmure St, Dundee DD1 1ED

Tel.: (01382) 228545

[www.dundeechamber.co.uk](http://www.dundeechamber.co.uk)

**Edinburgh Chamber of Commerce**

27 Melville Street, Edinburgh EH3 7JF

Tel.: (0131) 4777000

Fax: (0131) 4777002

e-mail: [information@ecce.org](mailto:information@ecce.org)

[www.ecce.org](http://www.ecce.org)

**Essex Chambers of Commerce**

Mid Essex Office, Alexandra House, 36A Church Street, Great Baddow

Chelmsford CM2 7HY

Tel.: (01245) 241 431/2

Fax: (01245) 241 500

e-mail: [info@essexchambers.co.uk](mailto:info@essexchambers.co.uk)

[www.essexchambers.co.uk](http://www.essexchambers.co.uk)

### **Exeter Chamber of Commerce**

6 Sunhill La, Topsham, Exeter EX3 0BR

Tel.: (01392) 879595

Fax: (01392) 877939

e-mail: [ecc@eclipse.co.uk](mailto:ecc@eclipse.co.uk)

[www.exeter-chamber-of-commerce.co.uk](http://www.exeter-chamber-of-commerce.co.uk)

### **Glasgow Chamber of Commerce**

30 George Sq, Glasgow G2 1EQ

Tel.: (0141) 572 2121

Fax: (0141) 221 2336

e-mail: [chamber@glasgowchamber.org](mailto:chamber@glasgowchamber.org)

[www.glasgowchamber.org](http://www.glasgowchamber.org)

### **Hereford & Worcestershire Chamber of Commerce**

Enterprise House, Castle Street, Worcester WR1 3EN

Fax: (01905) 616463

e-mail: [information@hwchamber.co.uk](mailto:information@hwchamber.co.uk)

[www.hwchamber.co.uk](http://www.hwchamber.co.uk)

### **The Kent Thames-side Chamber of Commerce**

The Royal Manor Gatehouse, Priory Road, Dartford DA1 2BJ

Tel.: (01322) 275667

Fax: (01322) 273043

e-mail: [info@kentthamesside-chamber.co.uk](mailto:info@kentthamesside-chamber.co.uk)

[www.kentthamesside-chamber.co.uk](http://www.kentthamesside-chamber.co.uk)

### **Leicestershire Chamber of Commerce & Industry**

4th Floor Norwich House, 26 Horsefair Street, Leicester LE1 5NT

Tel.: (0116) 247 1800

Fax: (0116) 247 0430

e-mail: [leics@chamberofcommerce.co.uk](mailto:leics@chamberofcommerce.co.uk)

[www.chamberofcommerce.co.uk](http://www.chamberofcommerce.co.uk)

### **Lincolnshire Chamber of Commerce & Industry**

Commerce House, Outer Circle Road, Lincoln LN2 4HY

Tel.: (01522) 523333

Fax: (01522) 823300

e-mail: [lincs-chamber@lincs-tecgroup.org.uk](mailto:lincs-chamber@lincs-tecgroup.org.uk)

[www.lincs-chamber.co.uk](http://www.lincs-chamber.co.uk)

### **London Chamber of Commerce & Industry**

33 Queen St, London EC4R 1AP

Tel.: (020) 7248 4444

Fax: (020) 7489 0391

e-mail: [lc@londonchamber.co.uk](mailto:lc@londonchamber.co.uk)

[www.londonchamber.co.uk](http://www.londonchamber.co.uk)

### **Northern Ireland Chamber of Commerce & Industry**

22 Great Victoria St, Belfast BT2 7BJ

Tel.: (028) 9024 4113



Fax: (028) 9024 7024

e-mail: [mail@northernirelandchamber.com](mailto:mail@northernirelandchamber.com)

[www.northernirelandchamber.com](http://www.northernirelandchamber.com)

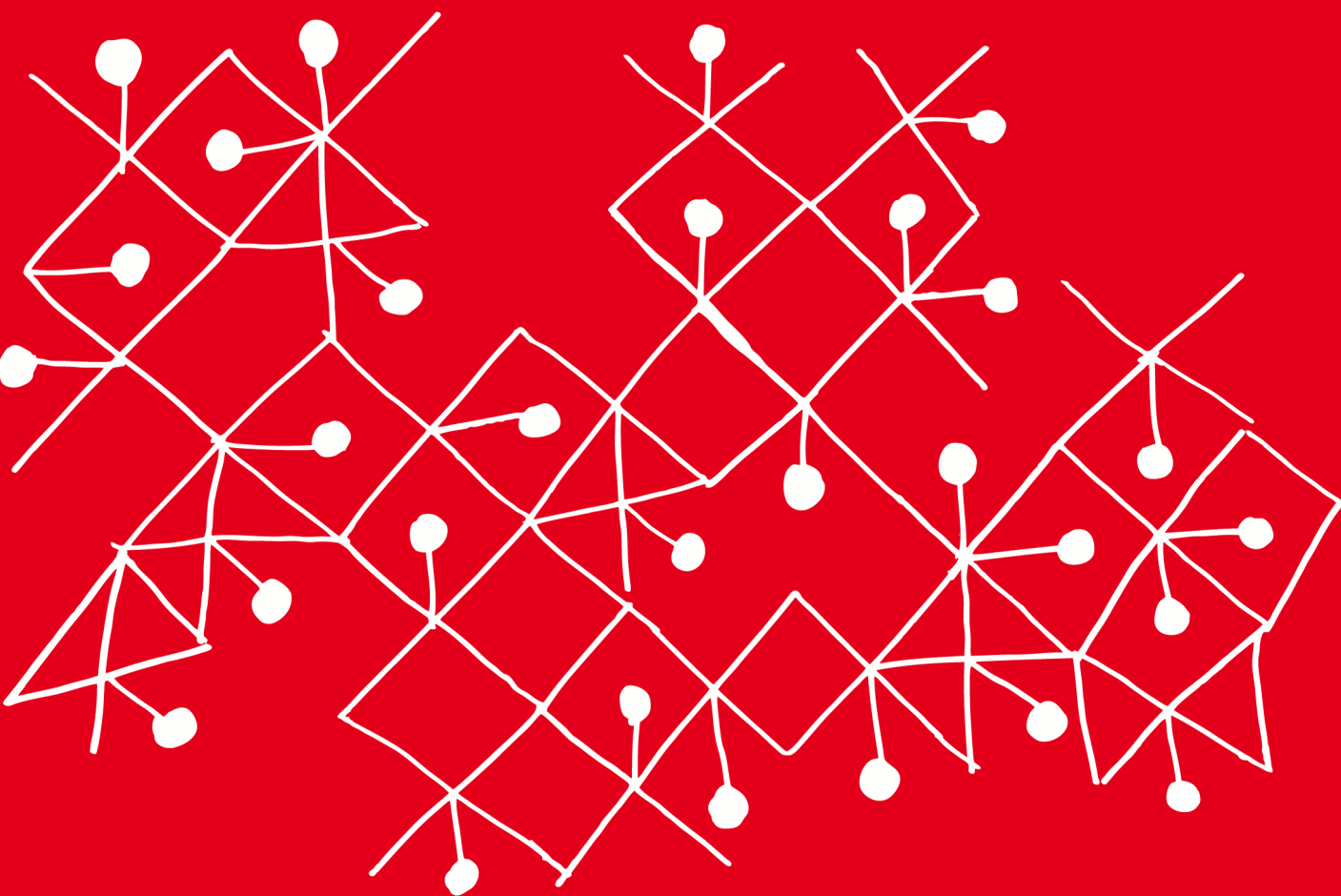
**Plymouth Chamber of Commerce & Industry**

22 Lockyer Street, Plymouth PL1 2QW

Tel.: (01752) 220471

Fax: (01752) 600333

e-mail: [chamber@plymouth-chamber.co.uk](mailto:chamber@plymouth-chamber.co.uk)



**INNOWACYJNA GOSPODARKA**  
NARODOWA STRATEGIA SPÓJNOŚCI



**MINISTERSTWO  
ROZWOJU**

**UNIA EUROPEJSKA**  
EUROPEJSKI FUNDUSZ  
ROZWOJU REGIONALNEGO



Projekt jest współfinansowany przez Unię Europejską ze środków Europejskiego Funduszu Rozwoju Regionalnego